

This photo is only for your reference, buttons and its location are order based.

# IDP59 Series

LC5000-E215TF

V1.0

INDUSTRIAL OPERATION PANEL



Size : 21.5 inches vertical

Resolution : 1920\*1080

Touch screen : multi-point capacitive touch screen

Mounting: Panel mounted

Customized button panel

## Specification :

		LC5000-E215TF
<b>Display</b>	Signal	VGA+DVI input
	Communication port	USB2.0 input
	Mounting	Panel mounting and VESA
	Dimension (W x H x D)	620mm*342mm*57mm
<b>Power</b>	Input	DC 12-24V
	Max consumption	35W
<b>LCD</b>	Size	21.5" full HD TFT LCD
	Resolution	1920 x 1080
	Color	16.7MB
	Active area (W x H)	476.64 × 268.11mm
	Backlight	LED
	MTBF (hours)	30000hrs
	Pixel Pitch	0.248 x 0.248
	Luminance	250cd/m2
	Contrast Ratio	1000:1
	Viewing angle	(L)89/(R)89/(T)89/(B)89
<b>Touch</b>	Type	Capacitive
	Transmittance	> 81%
	Response	< 5ms
	Surface hardness	Mohs' 7H
	Touch life cycle	250g / 100,000,000 times
	Point	10 points
<b>Environmental</b>	Work temperature	-10 ~ 60°C (14~140°F)
	Storage temperature	-20 ~ 80°C (-4 ~ 176°F)
	Relative humidity	5~95% (Non condensation)
	Shake	SSD applied: 1.5 Grms, IEC 60068-2-64, random, 5 ~ 500 Hz, 1 hr/axis
	Shock	SSD applied: 10 G, IEC 60068-2-64, Half-sine wave, 11ms duration
	EMC	CE/FCC Class A

## Front panel with buttons :

USB\*2/ red push button/ red push button/red push button/ red push button/ Emergency stop

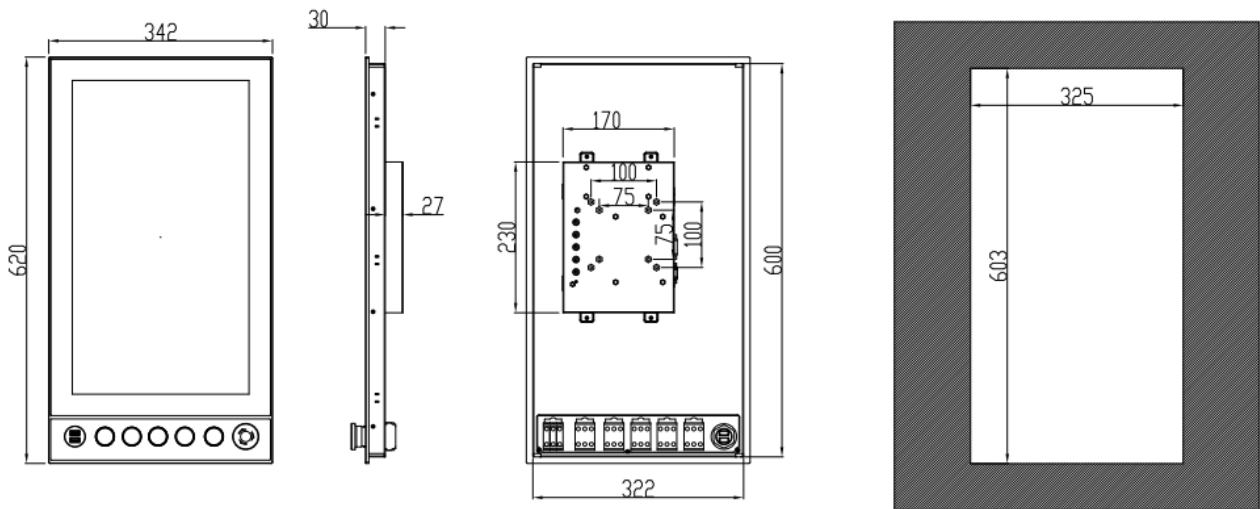


Standard hole: There are 6 button holes (1\*USB2.0 / 5\*F22 button)

- Left 1~2 USB button: diameter 1\* $\varnothing$  26.5"
- Other 5 button diameter is  $\varnothing$  22" , you can buy from NODKA or by yourself.
- If you need other type of buttons please contact with sales.

Dimensions : 620mm\*342mm\*57mm

Cut size : 605mm\*327mm, chamfering R5



**Ordering information :**

Model Name	Description
IDP59 (LC5000-E215TF)	Panel mounted/ 21.5" LCD/1920*1080/Capacitive touch screen/DVI+VGA Please check with sales rep for the button list.

**Option items :**

Adapter	KPL-060F, 12V60W adapter
Power cord	US/EU/UK...